

Notes: When the screw motor is optional, the power of conveying blower M2 is P=1.1kW IN=4.3A SET=4.3A

Scale	Page
Standard	1
GB	Totally 5
Voltage	3Φ400V
Frequency	50Hz

Drawing NO.	SGF-2628E-GB-400V-E-1
Title	Main Circuit Diagram

Version	E
Approved by	
Date	20210120

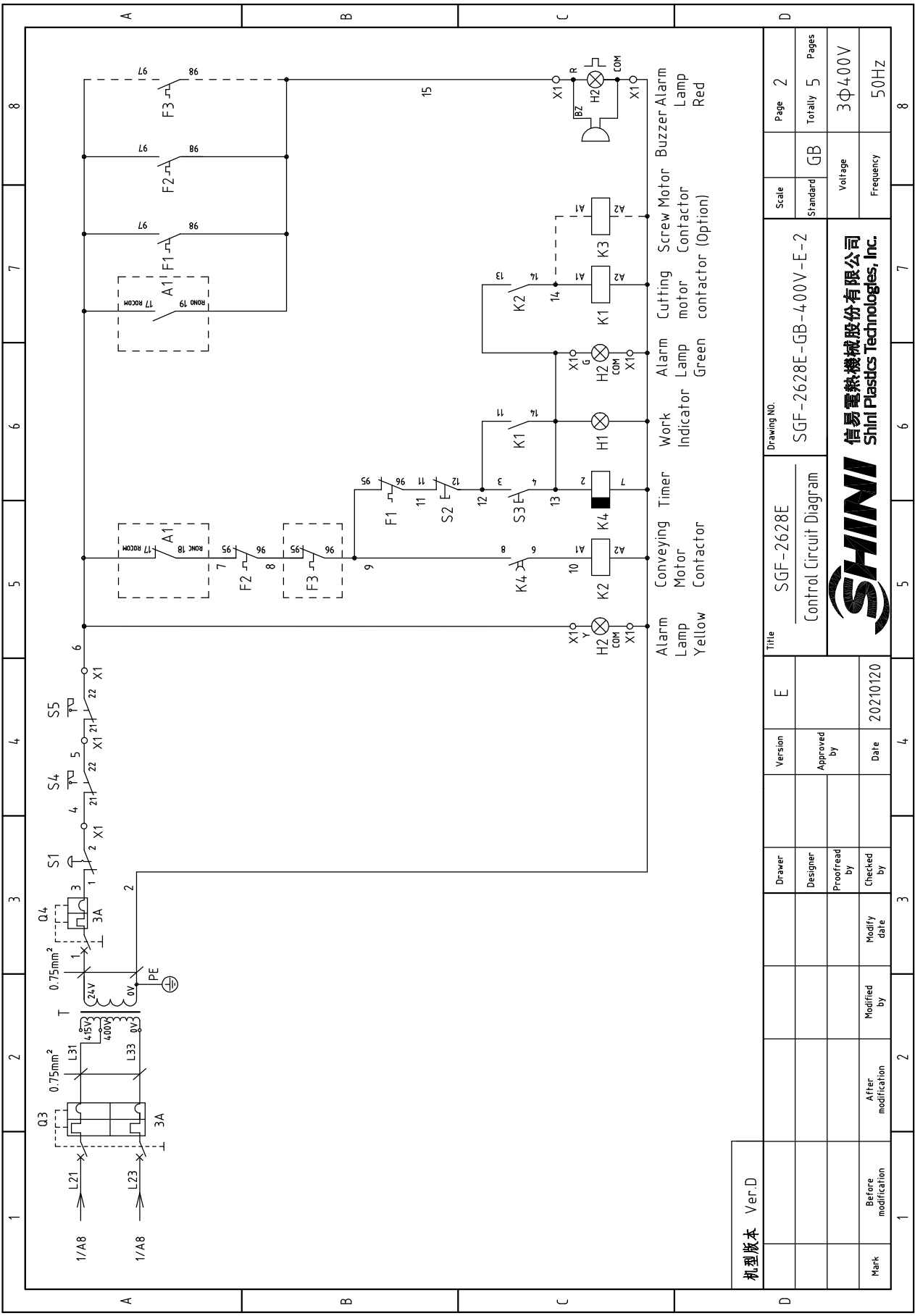
Drawer	
Designer	
Proofread by	
Checked by	

Modified by	
Modify date	

Mark	Before modification	2
Mark	After modification	3
Mark	Ver.D	4



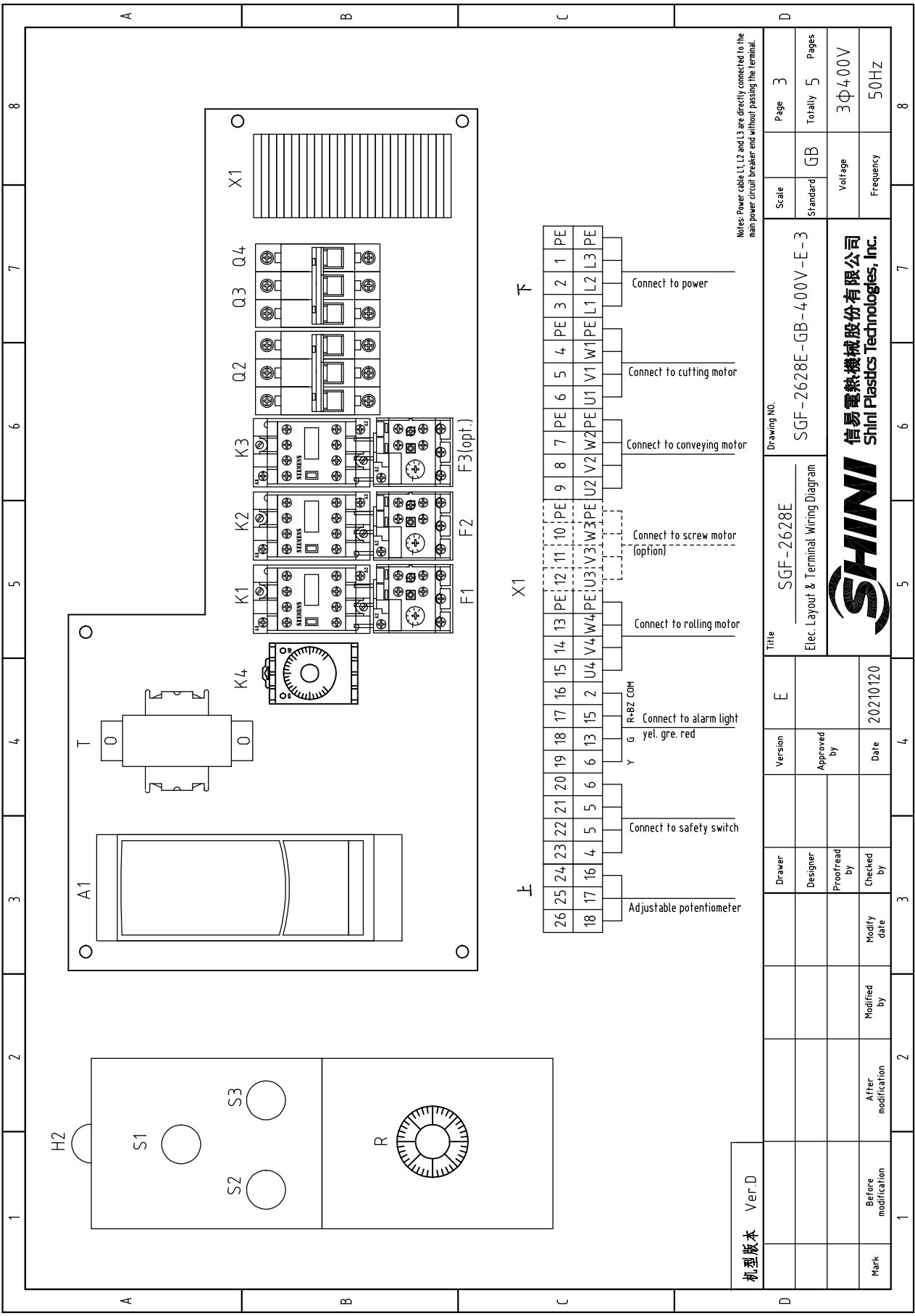
信易电热机械股份有限公司
Shini Plastics Technologies, Inc.



机型版本	Ver.D
Mark	Before modification
Modified by	
Modify date	
Checked by	
Proofread by	
Designer	
Drawer	
Version	E
Approved by	
Date	20210120

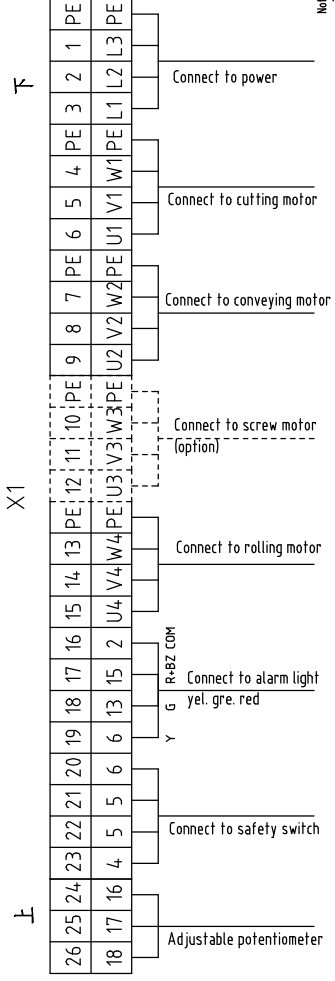
Title		SGF-2628E		Drawing NO.		SGF-2628E-GB-400V-E-2	
Control Circuit Diagram				Scale		Page 2	
				Standard		GB	
				Voltage		3Φ400V	
				Frequency		50HZ	
				Totally		5	
				Pages		8	






Notes: Power cable L1, L2 and L3 are directly connected to the main power circuit breaker field without passing the terminal.

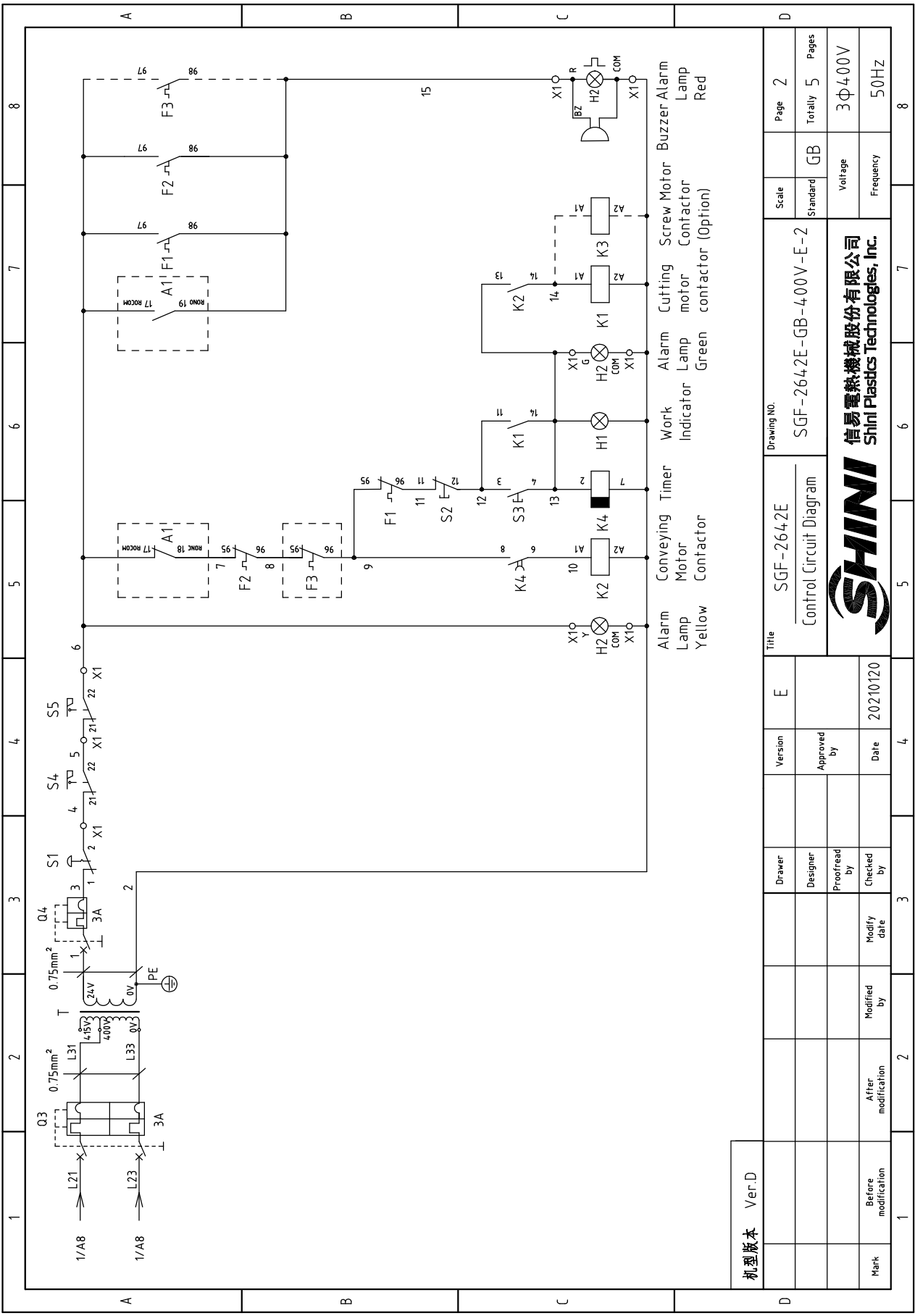
机 型 版 本	Ver.D	Scale	Page 3
Drawer		Standard	GB
Designer		Totally 5 Pages	
Proofread by		Voltage	3Φ400V
Checked by		Frequency	50HZ
Mark	Before modification	8	
	After modification	7	
	Modify date	6	
	Date	5	
	Approved by	4	
	Version	E	
Title		SGF-2628E	
Elec. Layout & Terminal Wiring Diagram		SGF-2628E-GB-400V-E-3	
Drawing NO.		SGF-2628E	
SHINI		信易电热机械股份有限公司 Shini Plastics Technologies, Inc.	



机 型 版 本 Ver.D

1	2		3	4	5	6		7	8																																																													
NO.	Symbol	Name	Manufacturer	Type	Specification	Number	Material number	Remark																																																														
1	Q1	Main switch	EATON	TO-2-1/EA/SVB	20A	1	YE10021160000	(1)																																																														
2	Q2	Circuit breaker	TECO	BM-63C/3025S	25A	1	YE40302503000																																																															
3	K1	Contactor	SIEMENS	3RT6017-1AB01	12A 24VAC 50/60Hz	1	YE00601702500																																																															
4		Auxiliary contact terminal	SIEMENS	3RH6911-1AA10	1N0	1	YE00691110000																																																															
5	K2	Contactor	SIEMENS	3RT6016-1AB01	9A 24VAC 50/60Hz	1	YE00601602500																																																															
6	K3	Contactor	SIEMENS	3RT6016-1AB01	9A 24VAC 50/60Hz	1	YE00601602500	(2)																																																														
7	K4	Timer relay	YUYUN	TRF-N 3M	24VAC 50/60Hz	1	YE86032400000																																																															
8	F1	Thermal overload relay	SIEMENS	3RU6116-1JB0	7-10A	1	YE01167100000																																																															
9	F2	Thermal overload relay	SIEMENS	3RU6116-1BB0	1.4-2A	1	YE01160140000	New																																																														
10	F2	Thermal overload relay	SIEMENS	3RU6116-1DB0	2.2-3.2A	1	YE01160220000	(2)																																																														
11	F3	Thermal overload relay	SIEMENS	3RU6116-0JB0	0.7-1A	1	YE01160700000	(2)																																																														
12	Q3	Circuit breaker	TECO	BM-63C/2003S 2P	3A	1	YE40200203000																																																															
13	Q4	Circuit breaker	TECO	BM-63C/1003S 1P	3A	1	YE40100203000																																																															
14	A1	Inverter	ABB	ACS355-03E-01A2-4	400V 0.37KW	1	YE75355400000																																																															
15		Controller pad	ABB	ACS-CP-C	-----	1	YE81040400000																																																															
16	T	Mutual transformer	-----	IN=400V/4.15V OUT=24V	80VA	1	YE70040006500																																																															
17	X1	Terminal board	Honeywell	SK2.5	2.5mm ²	25 20	YE60002503200	Change																																																														
18		Terminal board	Honeywell	SK2.5	2.5mm ²	3	YE60002503200	(2)																																																														
19		Terminal board	Honeywell	GK2.5PE	2.5mm ² PE	4	YE60002503400																																																															
20		Terminal board	Honeywell	GK2.5PE	2.5mm ² PE	1	YE60002503400	(2)																																																														
21	S1	Emergency stop button switch	SCHNEIDER	XB2BS542C	400VAC	1	YE11254200000	(1)																																																														
22	S2	Stop button switch	SCHNEIDER	XB2BA22C	400VAC	1	YE11222000000	(1)																																																														
23	S3,H1	Stop button switch (with light)	SCHNEIDER	XB2BW33B1C	24VAC	1	YE11233100000	(1)																																																														
24	S4,S5	Safety switch	SCHMERSRC	AZ152VK-14.76	AC-15	2	YE1614.7600100	(1)																																																														
25	H2	Three color alarm lamp	SHINI	Red. gre. yel.+buzzer	24VAC	1	BL90002401520	(1)																																																														
机型版本 Ver.D																																																																						
Notes:(1)Materials not in the control box; (2) Optional rotary feeding motor;																																																																						
<table border="1" style="width:100%; border-collapse: collapse;"> <tr> <td colspan="2">Title</td> <td colspan="2">Drawing NO.</td> <td colspan="2">Scale</td> <td colspan="2">Page</td> <td colspan="2">GB</td> <td colspan="2">Pages</td> </tr> <tr> <td colspan="2">SGF-2628E</td> <td colspan="2">SGF-2628E-GB-400V-E-4</td> <td colspan="2">Elec. Parts List 1</td> <td colspan="2">Standard</td> <td colspan="2">Voltage</td> <td colspan="2">Totally</td> </tr> <tr> <td colspan="2"></td> <td colspan="2"></td> <td colspan="2"></td> <td colspan="2"></td> <td colspan="2">3Φ400V</td> <td colspan="2">5</td> </tr> <tr> <td colspan="2"></td> <td colspan="2"></td> <td colspan="2"></td> <td colspan="2"></td> <td colspan="2">Frequency</td> <td colspan="2">50Hz</td> </tr> <tr> <td colspan="2"></td> <td colspan="2"></td> <td colspan="2"></td> <td colspan="2"></td> <td colspan="2"></td> <td colspan="2">8</td> </tr> </table>											Title		Drawing NO.		Scale		Page		GB		Pages		SGF-2628E		SGF-2628E-GB-400V-E-4		Elec. Parts List 1		Standard		Voltage		Totally										3Φ400V		5										Frequency		50Hz												8	
Title		Drawing NO.		Scale		Page		GB		Pages																																																												
SGF-2628E		SGF-2628E-GB-400V-E-4		Elec. Parts List 1		Standard		Voltage		Totally																																																												
								3Φ400V		5																																																												
								Frequency		50Hz																																																												
										8																																																												
 <p style="text-align: center;">信易电热机械股份有限公司 Shini Plastics Technologies, Inc.</p>																																																																						
<table border="1" style="width:100%; border-collapse: collapse;"> <tr> <td>Drawer</td> <td>Version</td> <td>E</td> <td colspan="2">4</td> <td colspan="2">7</td> <td colspan="2">8</td> <td colspan="2"></td> </tr> <tr> <td>Designer</td> <td>Approved by</td> <td></td> <td colspan="2"></td> <td colspan="2"></td> <td colspan="2"></td> <td colspan="2"></td> </tr> <tr> <td>Proofread by</td> <td>Date</td> <td>20210120</td> <td colspan="2"></td> <td colspan="2"></td> <td colspan="2"></td> <td colspan="2"></td> </tr> <tr> <td>Checked by</td> <td>Modify date</td> <td></td> <td colspan="2"></td> <td colspan="2"></td> <td colspan="2"></td> <td colspan="2"></td> </tr> </table>											Drawer	Version	E	4		7		8				Designer	Approved by										Proofread by	Date	20210120									Checked by	Modify date																									
Drawer	Version	E	4		7		8																																																															
Designer	Approved by																																																																					
Proofread by	Date	20210120																																																																				
Checked by	Modify date																																																																					
Mark	Before modification	After modification	Modified by	Modify date																																																																		
1																																																																						

1	2	3	4	5	6	7	8	
No.	Symbol	Name	Manufacturer	Type	Specification	Number	Material number	Remark
24	R	Adjustable potentiometer	TAYFE	LA42DWQ-22	10K	1	YE90422200000	(1)
25	M1	Motor	SIEMENS	4.0KW	400V 50/60Hz	1	-----	(1)
26	M2	Motor	SHINI	0.55KW	400V 50/60Hz	1	-----	(1)
27	M2	Motor	SHINI	1.1KW	400V 50/60Hz	1	-----	(1)(2)
28	M3	Motor	NORD	0.18KW	400V 50/60Hz	1	-----	(1)
29	M4	Motor	LIMING	0.4KW	400V 50/60Hz	1	-----	(1)
30		Terminal fittings	HONEYWELL	-----	-----	4	YE600000003900	
A								
B								
C								
D								
机型版本 Ver.D Notes:(1)Materials not in the control box; (2) Optional rotary feeding motor;								
Title			Version		Drawing NO.		Scale	
SGF-2628E			E		SGF-2628E-GB-400V-E-5		Page 5	
Elec. Parts List 2			Approved by		Elec. Parts List 2		Standard GB	
SHINI			Date		SHINI		Voltage	
SHINI 信易电热机械股份有限公司			20210120		SHINI 信易电热机械股份有限公司		Frequency	
SHINI Shini Plastics Technologies, Inc.					SHINI Shini Plastics Technologies, Inc.		3Φ400V	
Mark			Before modification		After modification		50Hz	
1			2		3		4	
5			6		7		8	



机型版本	Ver.D
Mark	Before modification
Modified by	
Modify date	
Checked by	20210120
Proofread by	
Designer	
Drawer	
Version	E

Title
SGF-2642E
Control Circuit Diagram

Drawing NO.
SGF-2642E-GB-400V-E-2

Scale	Page 2
Standard	Totally 5
GB	Pages
Voltage	3Φ400V
Frequency	50HZ


SHINI
信易电热机械股份有限公司
Shini Plastics Technologies, Inc.

1	2	3	4	5	6	7	8
---	---	---	---	---	---	---	---

1	2		3	4	5	6	7	8	
NO.	Symbol	Name	Manufacturer	Type	Specification	Number	Material number	Remark	
1	Q1	Main power switch	EATON	TO-2-1/EA/SVB	20A	1	YE10021160000	(1)	
2	Q2	Circuit breaker	TECO	BM-63C/3025S	25A	1	YE40302503000		
3	K1	Contacto	SIEMENS	3RT6018-1AB01	16A 24VAC 50/60Hz	1	YE00601802500	A	
4		Auxiliary contact terminal	SIEMENS	3RH6911-1AA10	1N0	1	YE00691110000		
5	K2	Contacto	SIEMENS	3RT6016-1AB01	9A 24VAC 50/60Hz	1	YE00601602500		
6	K3	Contacto	SIEMENS	3RT6016-1AB01	9A 24VAC 50/60Hz	1	YE00601602500	(2)	
7	K4	Timer relay	YUYUN	TRF-N 3M	24VAC 50/60Hz	1	YE86032400000		
8	F1	热过载继电器/Overload relay	SIEMENS	3RU6116-1KB0	9-12.5A	1	YE04169125000	Cancel	
9	F1	Thermal overload relay	SIEMENS	3RU6116-1AB0	11-16A	1	YE01611640000	New	
10	F2	Thermal overload relay	SIEMENS	3RU6116-1BB0	1.4-2A	1	YE01160140000	New	
11	F2	Thermal overload relay	SIEMENS	3RU6116-1DB0	2.2-3.2A	1	YE01160220000	(2)	
12	F3	Thermal overload relay	SIEMENS	3RU6116-0JB0	0.7-1A	1	YE01160700000	(2)	
13	Q3	Circuit breaker	TECO	BM-63C/2003S 2P	3A	1	YE40200203000		
14	Q4	Circuit breaker	TECO	BM-63C/1003S 1P	3A	1	YE40100203000		
15	A1	Inverter	ABB	ACS355-03E-01A2-4	400V 0.37KW	1	YE75355400000		
16		Controller pad	ABB	ACS-CP-C	-----	1	YE81040400000		
17	T	Mutual transformer	BAIYUN	IN=400V/415V OUT=24V	80VA	1	YE70040006500		
18	X1	Terminal board	Honeywell	SK2.5	2.5mm ²	25- 20	YE60002503200	Change	
19		Terminal board	Honeywell	SK2.5	2.5mm ²	3	YE60002503200	(2)	
20		Terminal board	Honeywell	GK2.5PE	2.5mm ² PE	4	YE60002503400		
21		Terminal board	Honeywell	GK2.5PE	2.5mm ² PE	1	YE60002503400	(2)	
22	S1	Emergency stop button switch	SCHNEIDER	XB2BS542C	400VAC	1	YE11254200000	(1)	
23	S2	Stop button switch	SCHNEIDER	XB2BA22C	400VAC	1	YE11222000000	(1)	
24	S3,H1	Stop button switch (with light)	SCHNEIDER	XB2BW33B1C	24VAC	1	YE11233100000	(1)	
25	S4,S5	Safety switch	SCHMERSER	AZ152VK-14.76	AC-15	2	YE16147600100	(1)	
机型版本 Ver.D									
Notes:(1)Materials not in the control box; (2) Optional rotary feeding motor;									
D		Title		Drawing NO.		Scale		Page	
		SGF-2642E		SGF-2642E-GB-400V-E-4		Standard GB		Page 4	
		Elec. Parts List 1				Voltage		Totally 5 Pages	
						Frequency		3Φ400V	
								50Hz	
Mark		Before modification		After modification		Modified by		Modify date	
						20210120			
1		2		3		4		5	
1		2		3		4		5	
6		7		8		9		10	



信易电热机械股份有限公司
Shini Plastics Technologies, Inc.

1		2		3		4		5		6		7		8	
NO.	Symbol	Name	Manufacturer	Type	Specification	Number	Material number	Remark							
24	H2	Three color alarm lamp	SHINI	Red. gre. yel.+buzzer	24VAC	1	BL90002401520	(1)							
25	R	Adjustable potentiometer	TAYFE	LA42DWQ-22	10K	1	YE90422200000	(1)							
26	M1	Motor	SIEMENS	5.5KW	400V 50/60Hz	1	-----	(1)	A						
27	M2	Motor	SHINI	0.55KW	400V 50/60Hz	1	-----	(1)							
28	M2	Motor	SHINI	1.1KW	400V 50/60Hz	1	-----	(1)(2)							
29	M3	Motor	NORD	0.18KW	400V 50/60Hz	1	-----	(1)							
30	M4	Motor	LIMING	0.4KW	400V 50/60Hz	1	-----	(1)							
31		Terminal fittings	HONEYWELL	-----	-----	4	YE60000003900								
									B						
									C						
									D						
机型版本		Ver.D	Notes:(1)Materials not in the control box; (2) Optional rotary feeding motor;												
Mark		Before modification	Modified by	Modify date	Checked by	Date	Version	E	Title		Drawing NO.		Scale	Page	5
		After modification				20210120			SGF-2642E	SGF-2642E-GB-400V-E-5		Standard	Totally	5	Pages
									Elec. Parts List 2		GB		3Φ	400V	
									 信易电热机械股份有限公司 Shini Plastics Technologies, Inc.		Voltage		50Hz		
									5	6	7	Frequency		8	