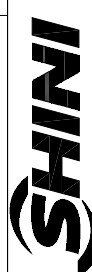
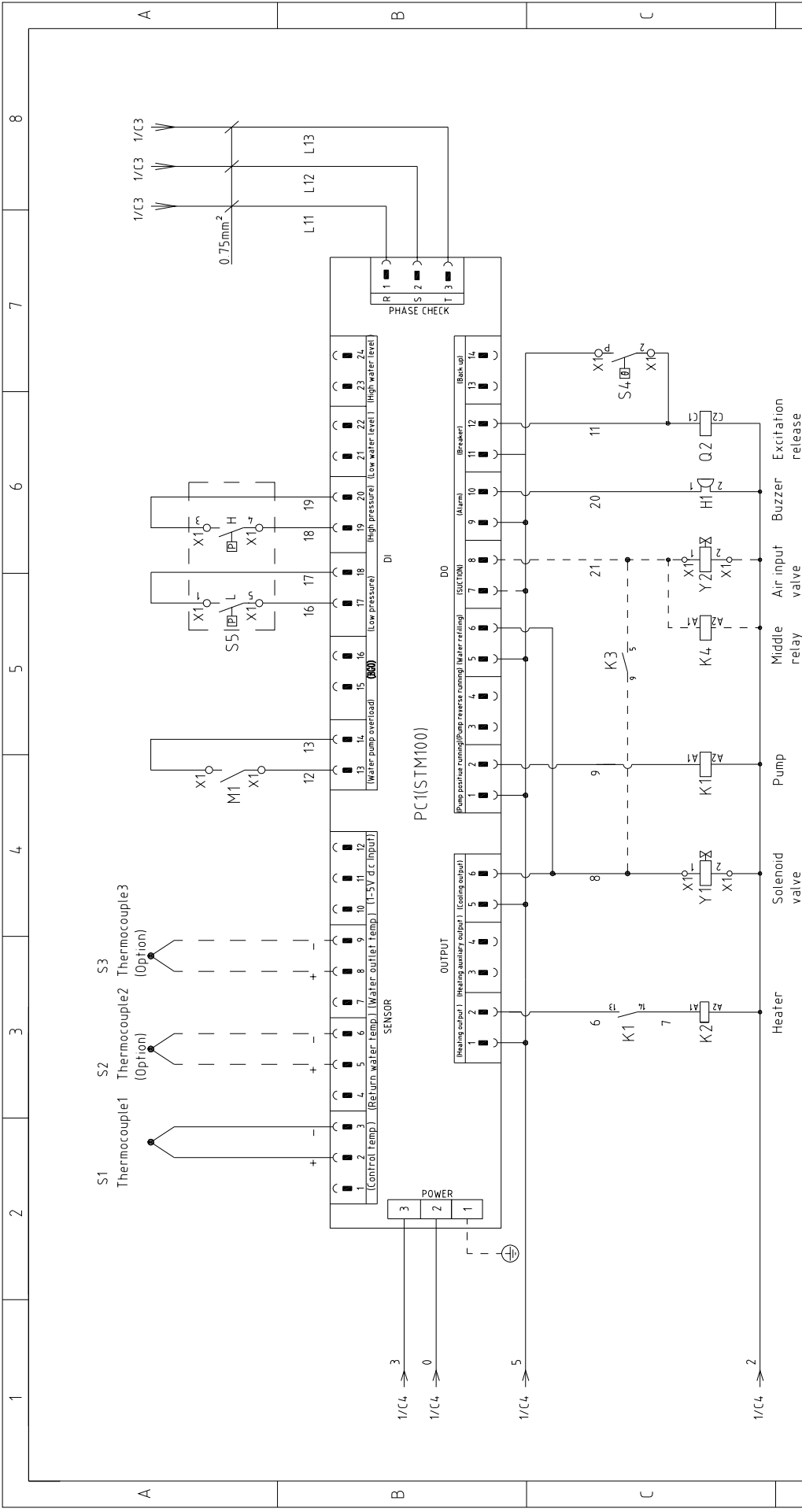


STM-607W	版本	Ver.F
STM-607MW	版本	Ver.E
STM-607WA	版本	Ver.E

When equipped with magnetic pump P=0.55KW IN=1.0A

D	Mark	Before modification	Modified by	2	3	4	5	6	7	8
	Modified date		20180730							
D	Drawn		Version	H	Title		Scale		Page	1
	Designer		Approved by		Main Circuit Diagram		STM-607W		Totally	5
D	Proofread by		Checked by		Drawing No		Standard		Voltage	400V
	Checked by		Date		STM-607W-CE-400V-H-1		CE		Frequency	50HZ
 信易电热机械股份有限公司 Shini Plastics Technologies, Inc.										



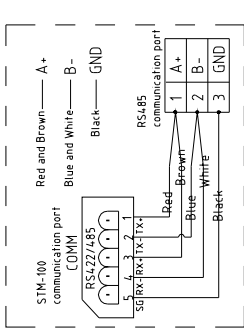
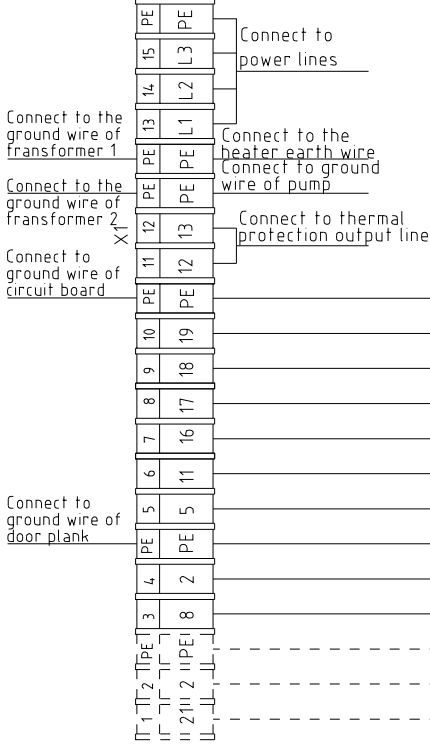
STM-607W	版本	Ver.F
STM-607MW	版本	Ver.E
STM-607WA	版本	Ver.E

Note: M1 is the overheat protection output contact of water pump.

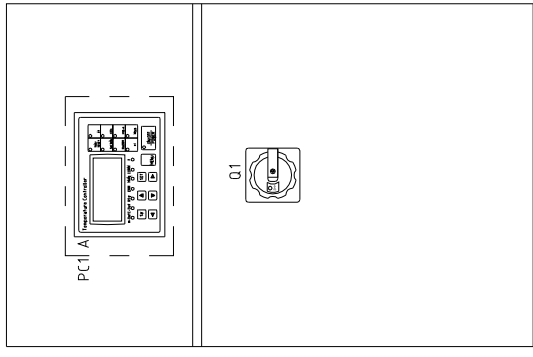
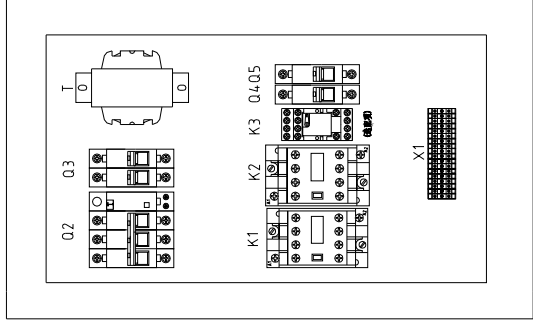
Mark	Before modification	Modified by	Date	20180730	Version	H	Title	STM-607W			Drawing NO	STM-607W-CE-4.00V-H-2			
	After modification	Checked by	Date	20180730		Approved by		Control Circuit Diagram				Standard	CE	Totally	5
												Scale		Page	2
												Voltage	400V		
												Frequency	50HZ		



A



S6 RS485 Communications wiring diagram



STM-607W	版本	Ver.F
STM-607MW	版本	Ver.E
STM-607WA	版本	Ver.E


Technical requirements: Pump and pipe heater should be directly connected to the output terminals of contactor and thermal overload relay.

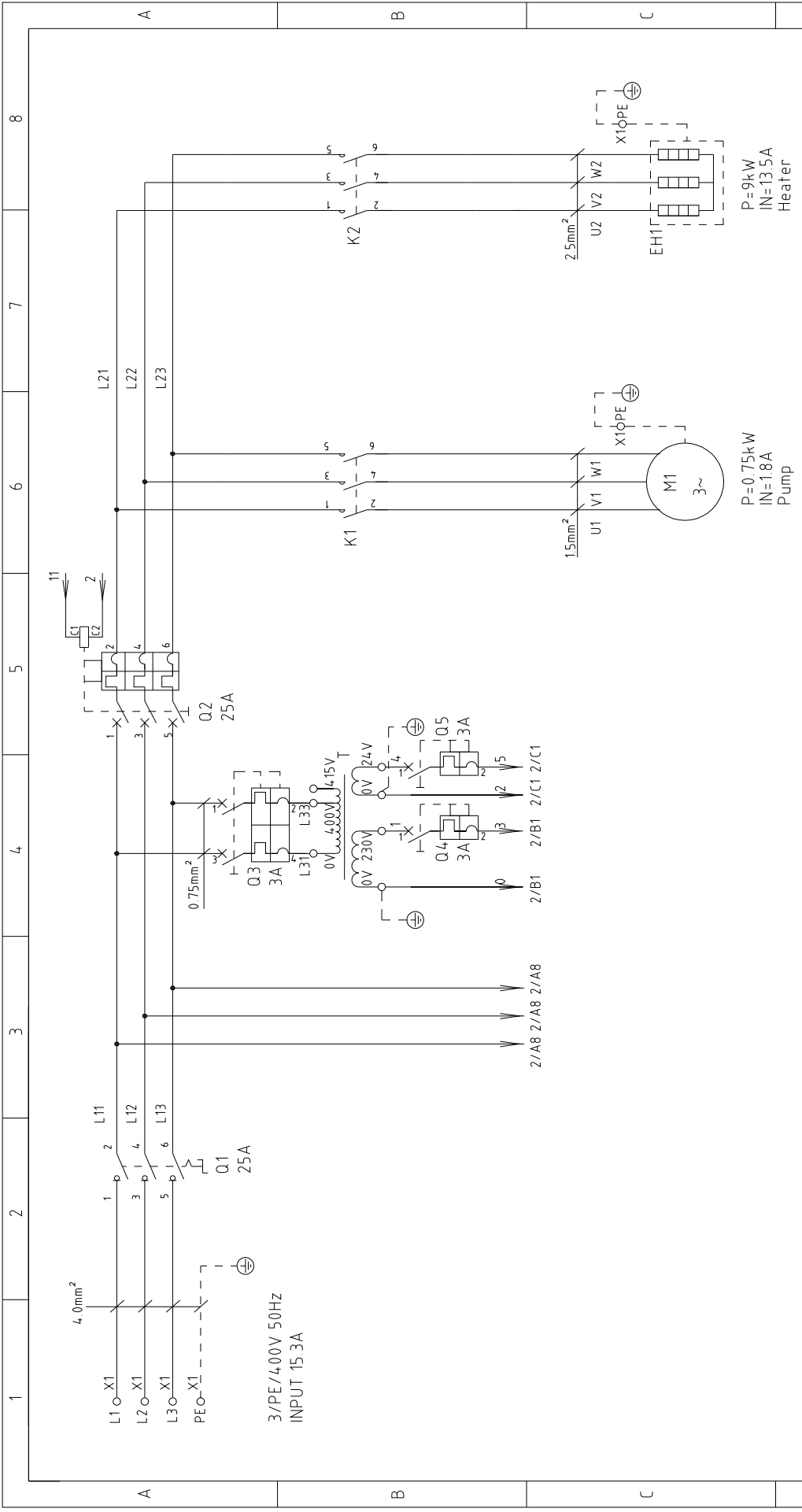
Drawing No		Page 3	
Title		Scale	
STM-607W	Electrical Components Layout	Standard	Totally 5 Pages
Version		Voltage	
H	Approved by	Frequency	
STM-607W-CE-4.00V-H-3		4.00V	50HZ
Designer	Proofread by	Mark	
	Checked by	Before modification	After modification
Date	Modify date		
20180730			



1	2		3	4	5	6	7	8
NO.	Symbol	Name	Manufacturer	Type	Specification	Number	Material number	Remark
1	Q1	Main power switch	ERATON	TO-2-1/EA/SVB	20A	1	YE10021160000	
2	Q2	Circuit breakers	TECO	BM-63C/3016S	16A	1	YE40301603000	
3	Q3	Excitation release	TECO	MX	24VAC	1	YE40024000000	A
4	Q4 Q5	Circuit breakers	TECO	BM-63C/2003S 2P	3A	1	YE40200203000	
5	Q4 Q5	Circuit breakers	TECO	BM-63C/1003S 1P	3A	2	YE40100203000	
6	K1	Contactors	SIEMENS	3RT16015-1AB01	24VAC	1	YE00601502500	
7	K2	Contactors	SIEMENS	3RT16018-1AB01	24VAC	1	YE00601802500	
8	K4	Middle relay	HONEYWELL	GR-2C-AC24V	24VAC	1	YE03022400300	(4)
9	T	Transformer	JIUXIN	IN=400V/415V OUT=24V/230V	80VA/500mA	1	YE70040007200	
10	S1	Thermocouple	SHINI	----	K	1	----	(1)
11	S2 S3	Thermocouple	SHINI	----	K	2	----	(1)(2)
12	S4	Overheat protector	----	----	----	1	----	(1)
13	S5	HI-LO pressure switch	----	----	----	1	----	(1)
14	S6	Communication interface board RS-485 (double Dsub-9pin connector)	YUYUN	----	PCS	1	YE90048501200	
15	PC1 A	Shell RS485(SAL-700G-A-1910)	BINCHEG	----	PCS	1	YR40048500000	
16	H1	Circuit board	HANYOUNGUX	STM100-21 (含通讯)	180-4.30V 50/60Hz	1	YE81184300200	
17	H1	Buzzer	JINGKANG	PK-35A	24VAC/DC	1	YE84003500600	(1)
18	Y1	Solenoid valve	----	----	24VAC	1	----	(1)
19	Y2	Solenoid valve	----	----	24VAC	1	----	(1)(4)
20	X1	Terminal board	HONEYWELL	SK2.5	----	13	YE60002503200	
21		Terminal board	HONEYWELL	SK2.5PE	----	5	YE60002503400	
22		Terminal board	HONEYWELL	SK2.5	----	2	YE60002503200	(4)
23		Terminal board	HONEYWELL	SK2.5PE	----	1	YE60002503400	(4)
24	M1	Motor	SHINI	TP-55	400V 50Hz 0.55kW	1	----	(1)
25	M1	Motor	SHINI	MP-55	400V 50Hz 0.55kW	1	----	(1)(3)
STM-607W 版本 Ver.F			STM-607WA 版本 Ver.E	Notes: (1)Means it's not the material inside the control box.(2)Means equipped with function of displaying water outlet and return water temperature.(3)Means equipped with magnetic pump.(4)Means optional air-blowing cleaning function.				
D				Version	H	Title		Scale
				Designer	Approved by	STM-607W		Standard
				Proofread by	Electrical Components List 1		CE	Page 4
				Checked by	Date	STM-607W-CE-400V-H-4		Totally 5 Pages
Mark				Before modification	Modified by	Modify date	Voltage	400V
				After modification	20180730	Frequency	50HZ	50HZ
1	2		3	4	5	6	7	8




1		2		3		4		5		6		7		8	
NO.	Symbol	Name	Manufacturer	Type	Specification	Number	Material number	Remark							
26	EH	Heater	SHINI	----	4.00V 50Hz 6kW	1	----	(1)							
27		Terminal fittings E/GKseries(honeywell)	HONEYWELL	----	PCS	6	YE60000003900								
A															
B															
C															
D															
STM-607W 版本 Ver.F STM-607MW 版本 Ver.E STM-607WA 版本 Ver.E STM-607W 版本 Ver.E Notes: (1)Means it's not the material inside the control box.(2)Means equipped with function of displaying water outlet and return water temperature.(3)Means equipped with magnetic pump.(4)Means optional air-blowing cleaning function.															
		Drawer		Version		H		Title		Drawing NO		Scale		Page	
		Designer		Approved by				STM-607W		STM-607W-CE-4.00V-H-5		Standard		Totally	
		Proofread by		Date		20180730		Electrical Components List 2				Voltage		4.00V	
Mark		Before modification		After modification		Modified by		Modify date		Checked by		Frequency		50HZ	
 信易電熱機械股份有限公司 Shini Plastics Technologies, Inc.															
1 2 3 4 5 6 7 8															

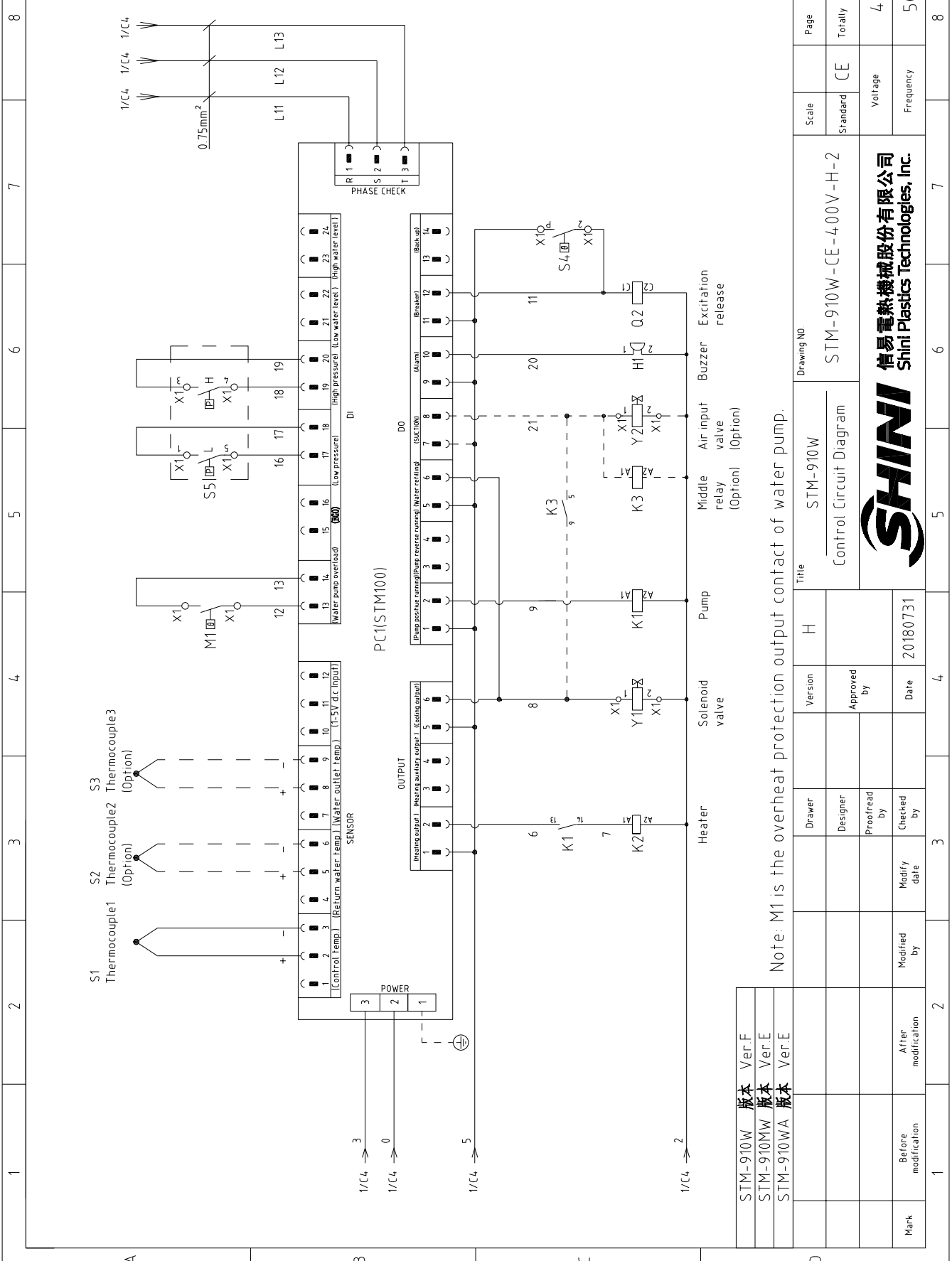


STM-910W	版本	Ver.F
STM-910MW	版本	Ver.E
STM-910WA	版本	Ver.E

When equipped with magnetic pump P=1.0KW IN=1.8A

D	Mark	Before modification	Modified by	Modify date	Checked by	Date	20180731	 信易电热机械股份有限公司 Shini Plastics Technologies, Inc.	Standard	CE	Voltage	400V	Pages	Totally	5
	Scale	CE	Frequency	50HZ											
Title		STM-910W		Drawing No		STM-910W-CE-4.00V-H-1		Page	1						

Main Circuit Diagram

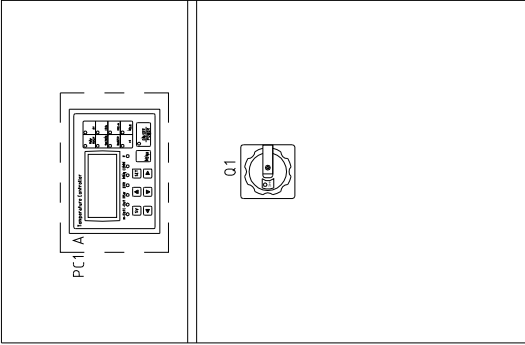
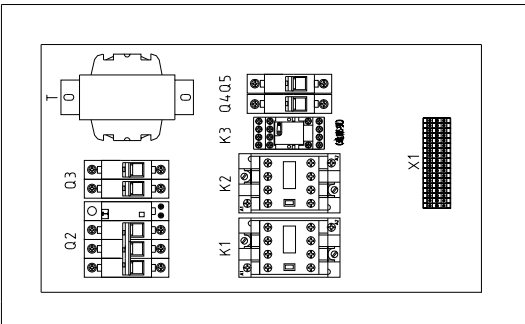
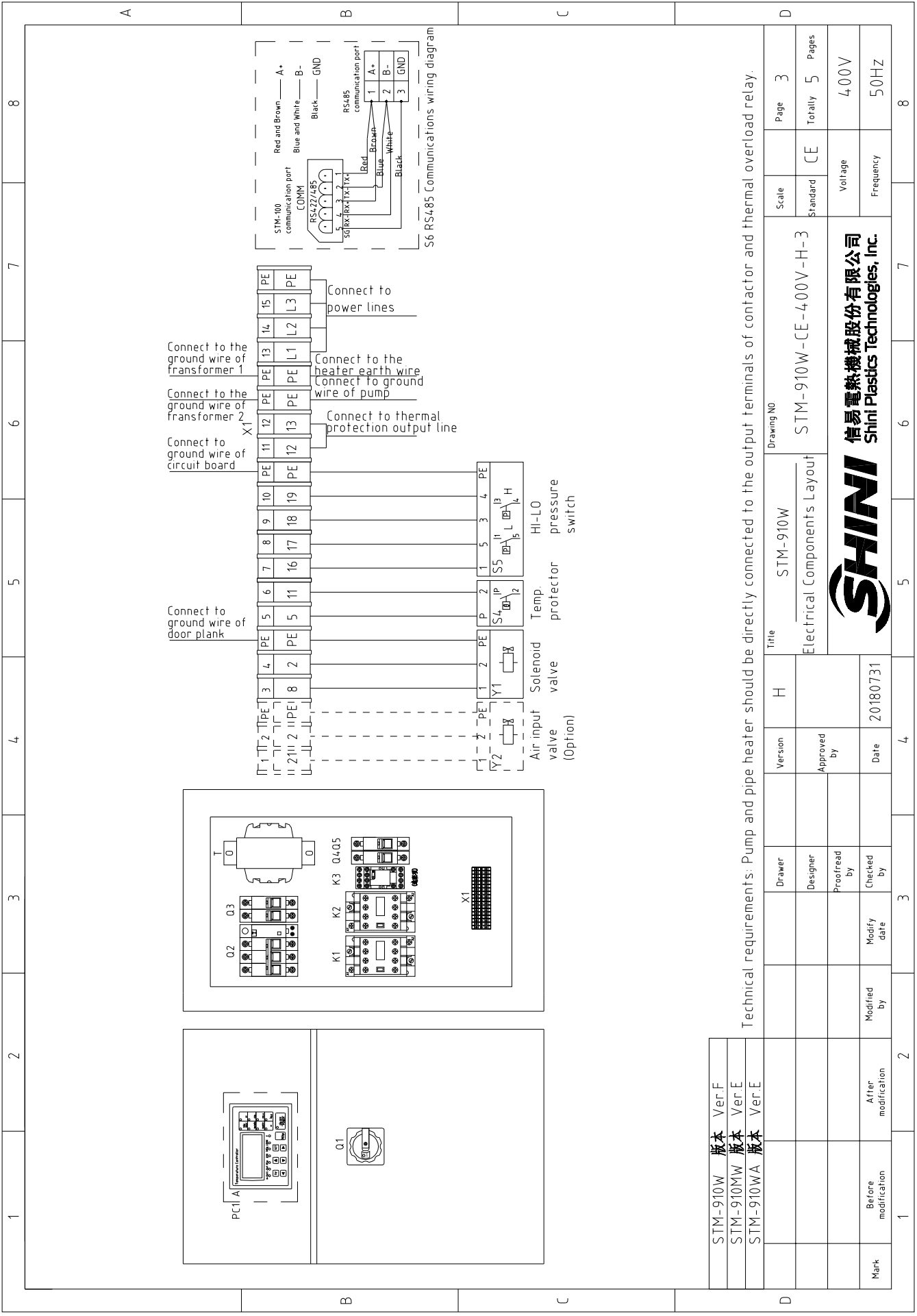


STM-910W	版本	Ver.F
STM-910MW	版本	Ver.E
STM-910WA	版本	Ver.E

Note: M1 is the overheat protection output contact of water pump.

Mark	Before modification	Modified by	20180731	Date	Approved by	Version	H	Title	Drawing NO			
	After modification	20180731	20180731						STM-910W	STM-910W-CE-4.00V-H-2	Scale	Page
Modified by									Standard	CE	Totally	5
Checked by									Voltage	400V	Frequency	50HZ
Proofread by												
Designer												
Drawer												






STM-910W	版本	Ver.F
STM-910MW	版本	Ver.E
STM-910WA	版本	Ver.E

Technical requirements: Pump and pipe heater should be directly connected to the output terminals of contactor and thermal overload relay.

Mark	Before modification	Modified by	Date	20180731	Title	STM-910W	Drawing No	STM-910W-CE-400V-H-3	Scale	Standard	Page	3
	After modification	Modified by	Date	20180731		Electrical Components Layout		Standard		Totally		5
<p style="text-align: center;">SHINI 信易电热机械股份有限公司 Shini Plastics Technologies, Inc.</p>												
1	2	3	4	5	6	7	8					

1		2		3		4		5		6		7		8	
NO.	Symbol	Name	Manufacturer	Type	Specification	Number	Material number	Remark							
1	Q1	Main power switch	EATON	TO-2-1/EA/SVB	20A	1	YE10021160000								
2	Q2	Circuit breakers	TECO	BM-63C/3025S	25A	1	YE40302503000								
3	Q3	Excitation release	TECO	MX	24VAC	1	YE40024000000								
4	Q4 Q5	Circuit breakers	TECO	BM-63C/2003S 2P	3A	1	YE40200203000								
5	K1	Contactors	SIEMENS	BM-63C/1003S 1P	3A	2	YE40100203000								
6	K2	Contactors	SIEMENS	3RT16015-1AB01	24VAC	1	YE00601502500								
7	K3	Contactors	SIEMENS	3RT16025-1AC20	24VAC	1	YE00602502600								
8	T	Middle relay	HONEYWELL	GR-2C-AC24V	24VAC	1	YE03022400300	(4)							
9	S1	Transformer	JIUXIN	IN=400V/415V OUT=24V/230V	80VA/350mA	1	YE70040007200								
10	S2 S3	Thermocouple	SHINI	----	K	1	----	(1)							
11	S4	Thermocouple	SHINI	----	K	2	----	(1)(2)							
12	S5	Overheat protector	----	----	----	1	----	(1)							
13	S6	Hi-LO pressure switch	----	----	----	1	----	(1)							
14	PC1 A	Communication interface board RS-485 (double Dsub-9pin connector)	YUYUN	----	PCS	1	YE90048501200								
15	H1	Shell RS485(SAL-700G-A-19)0	BINCHENG	----	PCS	1	YR40048500000								
16	Y1	Circuit board	HANYOUNGUX	STM100-21 (含通讯)	180~430V 50/60Hz	1	YE81184300200								
17	Y2	Buzzer	JINGKANG	PK-35A	24VAC/DC	1	YE84003500600	(1)							
18	X1	Solenoid valve	----	----	24VAC	1	----	(1)(4)							
19	X2	Solenoid valve	----	----	24VAC	1	----	(1)(4)							
20	X3	Terminal board	HONEYWELL	SK2.5	----	10	YE60002503200								
21	X4	Terminal board	HONEYWELL	SK2.5PE	----	4	YE60002503400								
22	X5	Terminal board	HONEYWELL	SK4	----	3	YE60000403200								
23	X6	Terminal board	HONEYWELL	GK5PE	----	1	YE60000403500								
24	X7	Terminal board	HONEYWELL	SK2.5	----	2	YE60002503200	(4)							
25	X8	Terminal board	HONEYWELL	SK2.5PE	----	1	YE60002503400	(4)							
Notes: (1)Means it's not the material inside the control box.(2)Means equipped with function of displaying water outlet and return water temperature.(3)Means equipped with magnetic pump.(4)Means optional air-blowing cleaning function.															
D Drawing NO: STM-910W Title: STM-910W Electrical Components List 1 Scale: STM-910W-CE-4.00V-H-4 Page: 4															
Standard: CE Voltage: 400V															
Frequency: 50HZ															



1		2		3		4		5		6		7		8	
N0.	Symbol	Name	Manufacturer	Type	Specification	Number	Material number	Remark							
26	M1	Motor	SHINI	TP-75	4.00V 50Hz 0.75kW	1	----	(1)							
27	M1	Motor	SHINI	MP-100	4.00V 50Hz 1.0kW	1	----	(1)(3)							
28	EH	Heater	SHINI	----	4.00V 50Hz 9kW	1	----	(1)							
29		Terminal fittings E/GKseries(honeywell)	HONEYWELL	----	PCS	6	YE60000003900								
A															
B															
C															
D															
<p>STM-910W 版本 Ver.F STM-910Mw 版本 Ver.E STM-910WA 版本 Ver.E</p> <p>Notes: (1)Means it's not the material inside the control box (2)Means equipped with function of displaying water outlet and return water Temperature. (3)Means equipped with magnetic pump. (4)Means optional air-blowing cleaning function.</p>															
				Title		Version		H		Drawing NO		Scale		Page	
				STM-910W						STM-910W-CE-400V-H-5		Standard		CE	
				Electrical Components List 2		Approved by				Voltage		Frequency		Totally	
				Date		20180731				400V		50HZ		5	
Mark				Before modification		Modified by		Modify date		Checked by		Proofread by		Designer	
 <p>信易電熱機械股份有限公司 Shini Plastics Technologies, Inc.</p>															
<p>1 2 3 4 5 6 7 8</p>															